

# 50HP

# KF series



Dettagli pompa  
Pump details

COSTRUZIONE / CONSTRUCTION	
POWER FRAME	71
CONFIGURATION	TRIPLEX HOR
MATERIAL STANDARD	S.S. / ALU / CER

CARTER SIMMETRICO per conversione rapida sporgenza albero dx o sx.  
 SYMMETRICAL POWER END for easy and quick right left side shaft conversion.



ATEX  
II 2GD ck T4/T135°C  
ON REQUEST

## RECOMMENDED



H1520

H2820

## Standard

Pompa Pump	Portata Volume		Pressione Pressure			g/min r.p.m.	Potenza Power		Peso Weight kg
	L/min	US Gpm	bar	MPa	p.s.i.		hp	kW	
KF 28	93	24.5	210	21	3050	1000	50	37,0	72
KF 30	106	28.0	200	20	2900	1000	55	40,0	72
KF 32	120	31.7	180	18	2610	1000	56	41,2	72
KF 36	122	32.2	160	16	2320	800	51	37,5	72
	137	36.2	140	14	2030	900	50	37,5	
	153	40.4	130	13	1890	1000	52	38,2	
KF 40	170	45.0	110	11	1600	900	49	36,0	72

## Run dry - Hi Temp.

Pompa Pump	Portata Volume		Pressione Pressure			g/min r.p.m.	Potenza Power		Peso Weight kg
	L/min	US Gpm	bar	MPa	p.s.i.		hp	kW	
KFR 28	93	24.5	210	21	3050	1000	50	37,0	72
KFR 30	106	28.0	200	20	2900	1000	55	40,0	72
KFR 32	120	31.7	180	18	2610	1000	56	41,2	72
KFR 36	122	32.2	160	16	2320	800	51	37,5	72
	137	36.2	140	14	2030	900	50	37,5	
	153	40.4	130	13	1890	1000	52	38,2	
KFR 40	170	45.0	110	11	1600	900	49	36,0	72

## AISI 316L s.s. - Hi Temp. 85°C

Pompa Pump	Portata Volume		Pressione Pressure			g/min r.p.m.	Potenza Power		Peso Weight kg
	L/min	US Gpm	bar	MPa	p.s.i.		hp	kW	
SS71 93	93	24.5	210	21	3050	1000	48	35,3	72
SS71 106	106	28.0	200	20	2900	1000	55	40,0	72
SS71 153	122	32.2	160	16	2320	800	51	37,5	72
	137	36.2	140	14	2030	900	50	37,5	
	153	40.4	130	13	1890	1000	52	38,2	
SS71 170	170	44.9	100	10	1900	1000	44	36,0	72

## AISI 420 s.s. - Hi Temp. 85°C

Pompa Pump	Portata Volume		Pressione Pressure			g/min r.p.m.	Potenza Power		Peso Weight kg
	L/min	US Gpm	bar	MPa	p.s.i.		hp	kW	
SN71 93	93	24.5	210	21	3050	1000	50	37,0	72
SN71 106	106	28.0	200	20	2900	1000	55	40,0	72
SN71 153	122	32.2	160	16	2320	800	51	37,5	72
	137	36.2	140	14	2030	900	50	37,5	
	153	40.4	130	13	1890	1000	52	38,2	
SN71 170	170	44.9	100	10	1600	900	49	36,0	72

Portate teoriche con rendimento volumetrico 100% / Volumes are theoretical at 100% volumetric efficiency  
 Dati tecnici arrotondati per facilità di lettura / Technical data rounded for ease in readability

## OPZIONI TRASMISSIONI - DRIVE OPTIONS



Predisposizione per motore idraulico SAE J744-C albero scanalato 14T 12/24 DP  
 Hydraulic motor mount SAE J744-C spline shaft 14T 12/24 DP



Flangia supporto per azionamenti diretti 1000 rpm  
 Flange for direct drive mount 1000 rpm



Predisposizione presa di forza ausiliaria opposta albero moto  
 Auxiliary P.T.O. opposite to shaft side



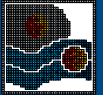
Riduttore - Gearbox  
 Disponibile riduttore laterale rapporti 1:1,25 - 1,5 - 1,83  
 Optional gear box available ratios 1:1,25 - 1,5 - 1,83

## LETTORE DI GIRI ZRPM1 ZRPM1 REVOLUTION COUNTER

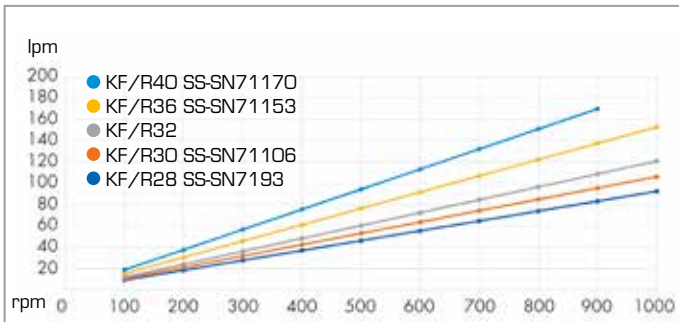


Sensore di prossimità induttivo completo di connettore femmina M12, 4 pin, IP67, a cablare, con ghiera montaggio M18 x 1 - Alimentazione 12/24 VDC  
 Inductive proximity sensor, c/w female connector M12 4 pin, IP67, field attachable, ring nut reduction M18 x 1 - Power supply 12/24 VDC

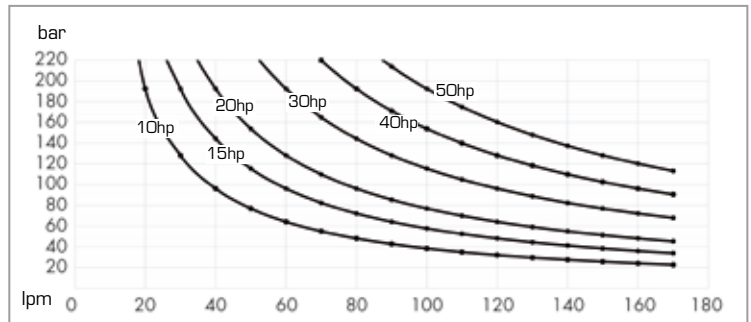




### FLOW GRAPH (crankshaft speed)

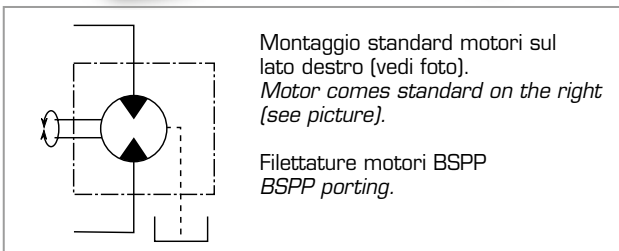
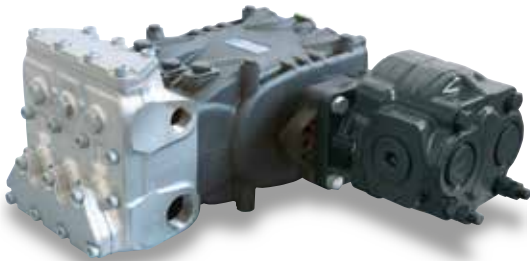


### POWER GRAPH



Dati indicativi non vincolanti soggetti a modifica senza preavviso/ *Datas are indicative not binding subject to change without notice.*

# HY-PACK HYDRAULIC POWERED PUMPS



Mod.	Volume		Pressure		Speed	Gear IPH 117 cc.				Piston IPH 84 cc.				Piston IPH 110 cc.			
	L/min	Gpm	bar	p.s.i.	r.p.m.	L/min	Gpm	bar	p.s.i.	L/min	Gpm	bar	p.s.i.	L/min	Gpm	bar	p.s.i.
KF 28	93	24.5	210	3050	1000	117	30.9	230	3340	84	22.2	320	4640	110	29.1	240	3480
KF 30	106	28.0	200	2900	1000	117	30.9	250	3630	84	22.2	340	4930	110	29.1	260	3770
KF 32	120	31.7	180	2610	1000	117	30.9	250	3630	84	22.2	350	5080	110	29.1	270	3920
KF 36	153	40.0	130	1890	1000	117	30.9	230	3340	84	22.2	320	4640	110	29.1	250	3630
KF 40	170	45.0	110	1600	900	105	27.8	240	3480	76	20.0	340	4930	99	26.2	260	3770



ACCESSORIES VEDI Pag.70 - SEE pag.70

### TUBI ALTA PRESSIONE SPURGO - HIGH PRESSURE SEWER CLEANING HOSES

PILOTFLEX 120			Long Life		
Ø	Max bar/psi	L (mts)	Ø	Max bar/psi	L (mts)
3/16"	120 - 17500	10 - 15 - 20 - 120	3/8"	280 - 4000	40 - 50 - 60 - 80 - 100
1/4"		10 - 15 - 20 - 120	1/2"		50 - 60 - 80 - 100 - 120
5/16"		10 - 15 - 20 - 120	3/4"		50 - 60 - 80 - 100 - 120
		1"	60 - 80 - 100 - 120 - 150		
			1" 1/4"		60 - 80 - 100 - 120 - 150